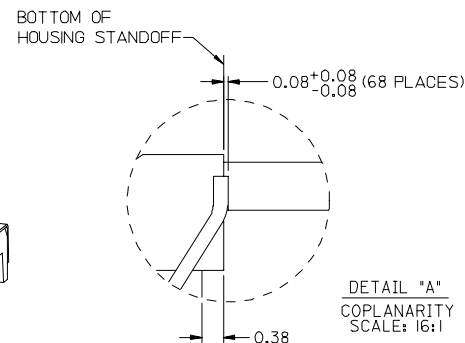
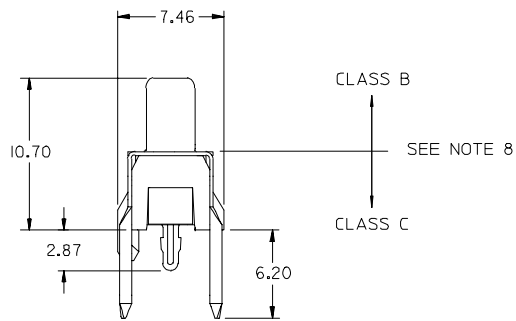
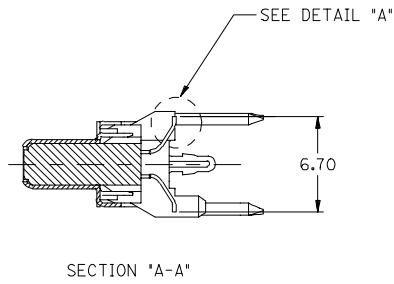
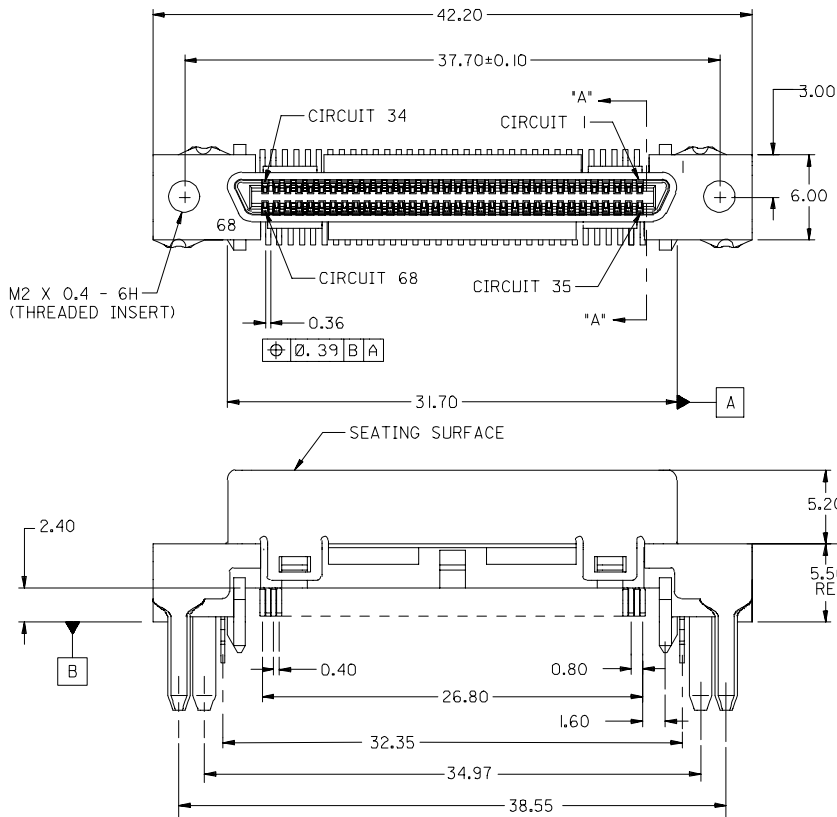


13 12 11 10 9 8 7 6 5 4 3 2 1

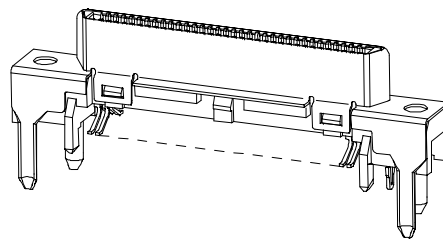
J
I
H
G
F
E
D
C
B
A

J
I
H
G
F
E
D
C
B
A



NOTES:

1. MATERIALS:
HOUSING: HIGH TEMP THERMOPLASTIC, COLOR: BLACK, UL 94V-0.
TERMINAL: PHOSPHOR BRONZE
SHIELD: STEEL
THREADED INSERT: BRASS
SCREWLOCK: STEEL
2. FINISH:
TERMINAL: 0.05-0.25 MICROMETER GOLD FLASH IN OVER 0.75 MICROMETER MINIMUM PALLADIUM NICKEL IN CONTACT AREA; 1.87 MICROMETER MINIMUM TIN IN TAIL AREA;
ALL OVER 1.25 MICROMETER MINIMUM NICKEL.
SHIELD: 3.81 MICROMETERS MINIMUM BRIGHT TIN OVER 1.27 MICROMETERS MINIMUM NICKEL OVER COPPER FLASH (OPTIONAL).
THREADED INSERT: NICKEL
SCREWLOCK: NICKEL
3. APPLICABLE PRODUCT SPEC: PS-71425-9999.
4. PACKAGING: TUBE PACK PER PK-70873-0824.
5. APPLICABLE STANDARDS: EIA-3652.
6. MATING ASSEMBLY: 71425-0001 PLUG.
7. DATE CODE: YEAR AND WEEK PER EIA -476-A.
8. PRODUCT COMPLIES WITH COSMETIC SPECIFICATION PS-45499-002. SEE FIGURE ABOVE FOR SURFACE CLASSIFICATIONS.



ADD SCRWLK GUIDELINE EC NO: UCP2007-2867 DRAWN BY: DRWINBARKER 2007/05/30 CHKD: SDANNELLEY 2007/05/30 APPR: SMILLER 2007/06/01	QUALITY SYMBOLS ▽=0 ▽=0	GENERAL TOLERANCES (UNLESS SPECIFIED)		DIMENSION STYLE MM ONLY		SCALE	DESIGN UNITS INCH	THIRD ANGLE PROJECTION			
		4 PLACES ± --- ± ---	3 PLACES ± --- ± ---	2 PLACES ± 0.25 ± ---	1 PLACE ± --- ± ---	DRAWN BY DBOWEN	DATE 1997/04/11	TITLE SALES ASSY VHDCI 0.8MM PITCH 68 CKT VERTICAL SMT RECEPTACLE			
		ANGULAR ±1/2°				CHECKED BY SSAMPSON	DATE 1997/04/11	MOLEX INCORPORATED			
		DRAFT WHERE APPLICABLE MUST REMAIN WITHIN DIMENSIONS				APPROVED BY DBOWEN	DATE 1997/04/11	MATERIAL NO. SEE TABLE	DOCUMENT NO. SD-73776-002	SHEET NO. 1 OF 2	

12 11 10 9 8 7 6 5 4 3 2 1

